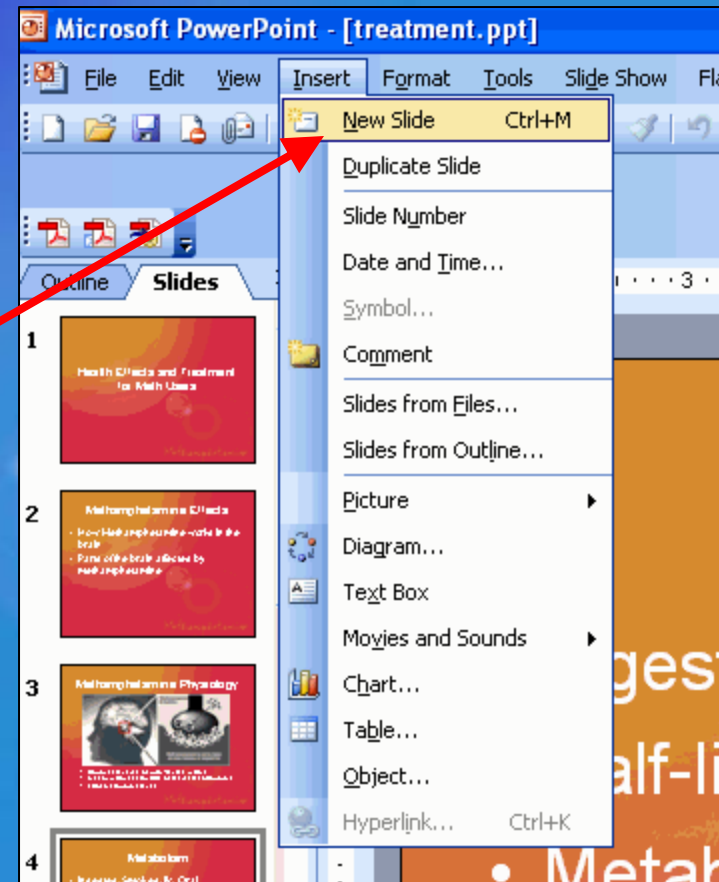


How to Modify an Existing PowerPoint Presentation

Methamphetamine

Adding a New Slide

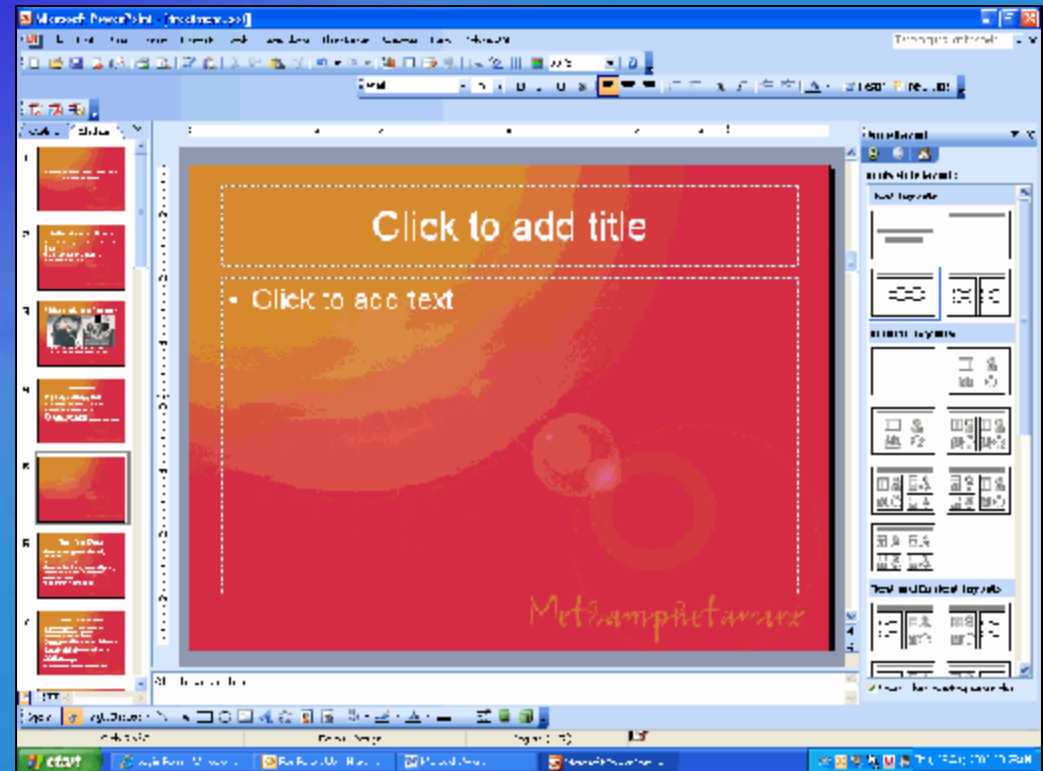
- Open the existing presentation that you want to modify
- Click the “New Slide” option under the Insert menu.



Methamphetamine

Adding a New Slide

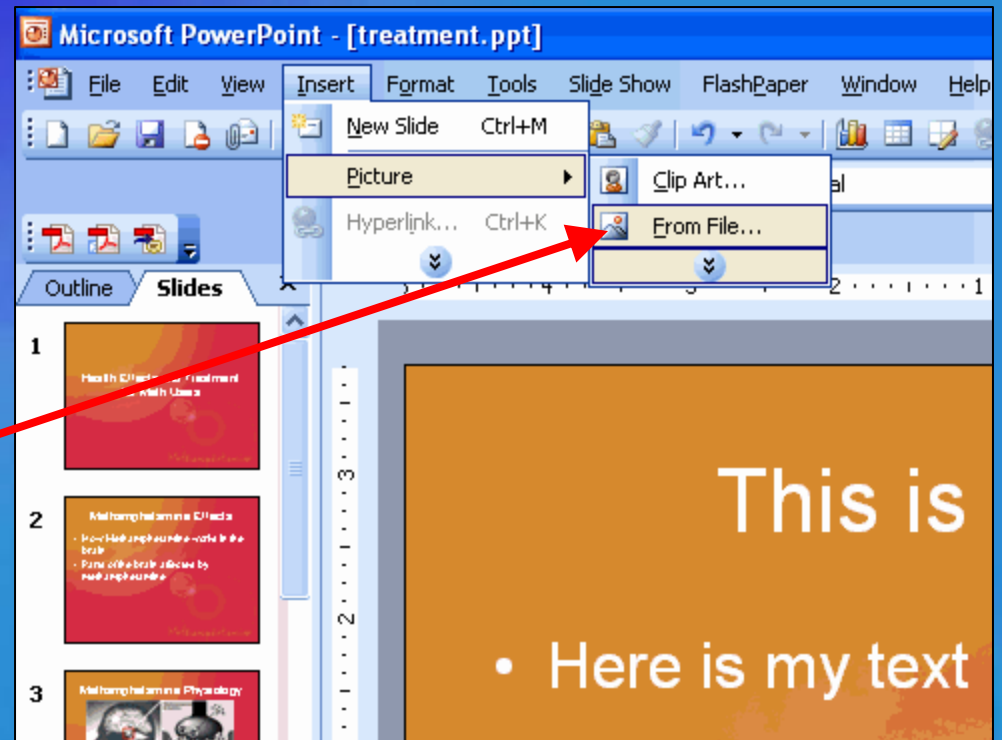
- Type your title in the “Click to add title” area
- Type your text in the “Click to add text” area



Methamphetamine

To Add a Graphic or Picture

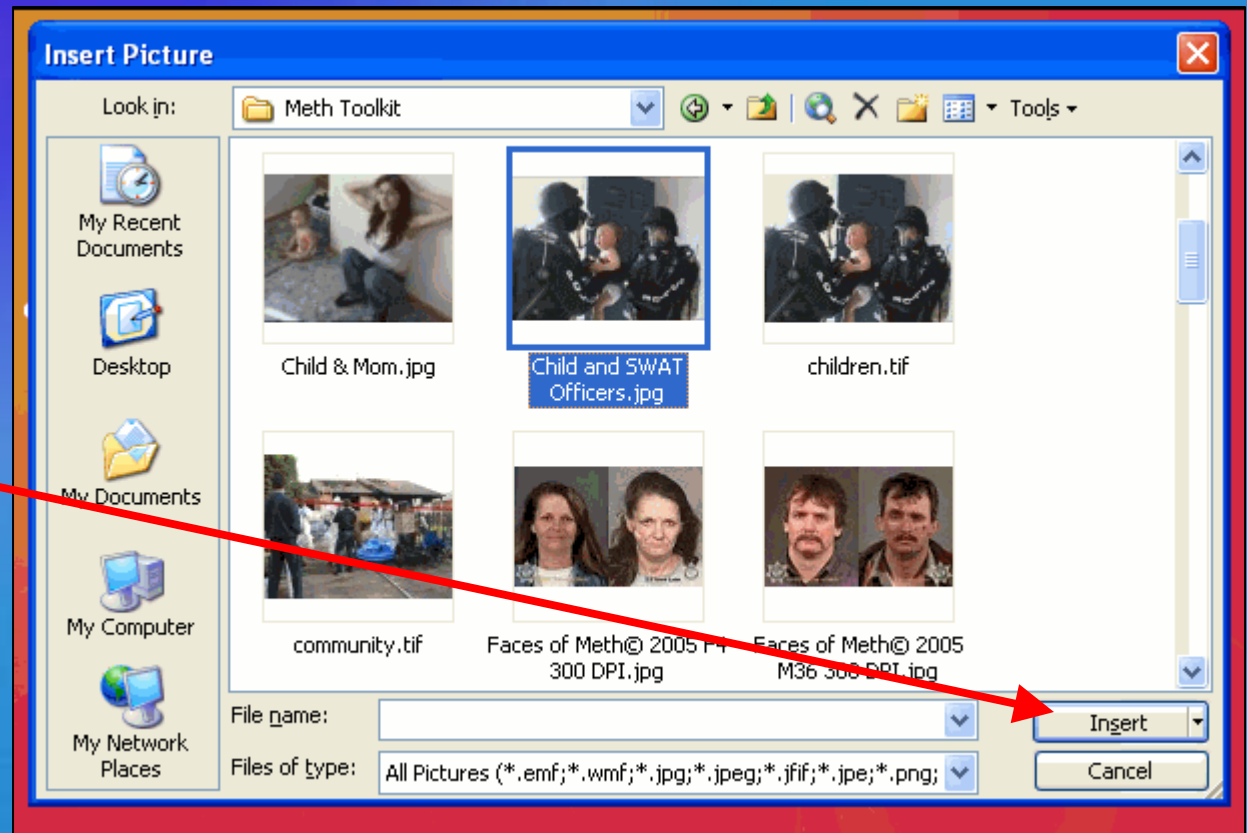
- Click the “Picture” option under the Insert menu.
- Click “From File” option from the Picture menu.



Methamphetamine

To Add a Graphic or Picture

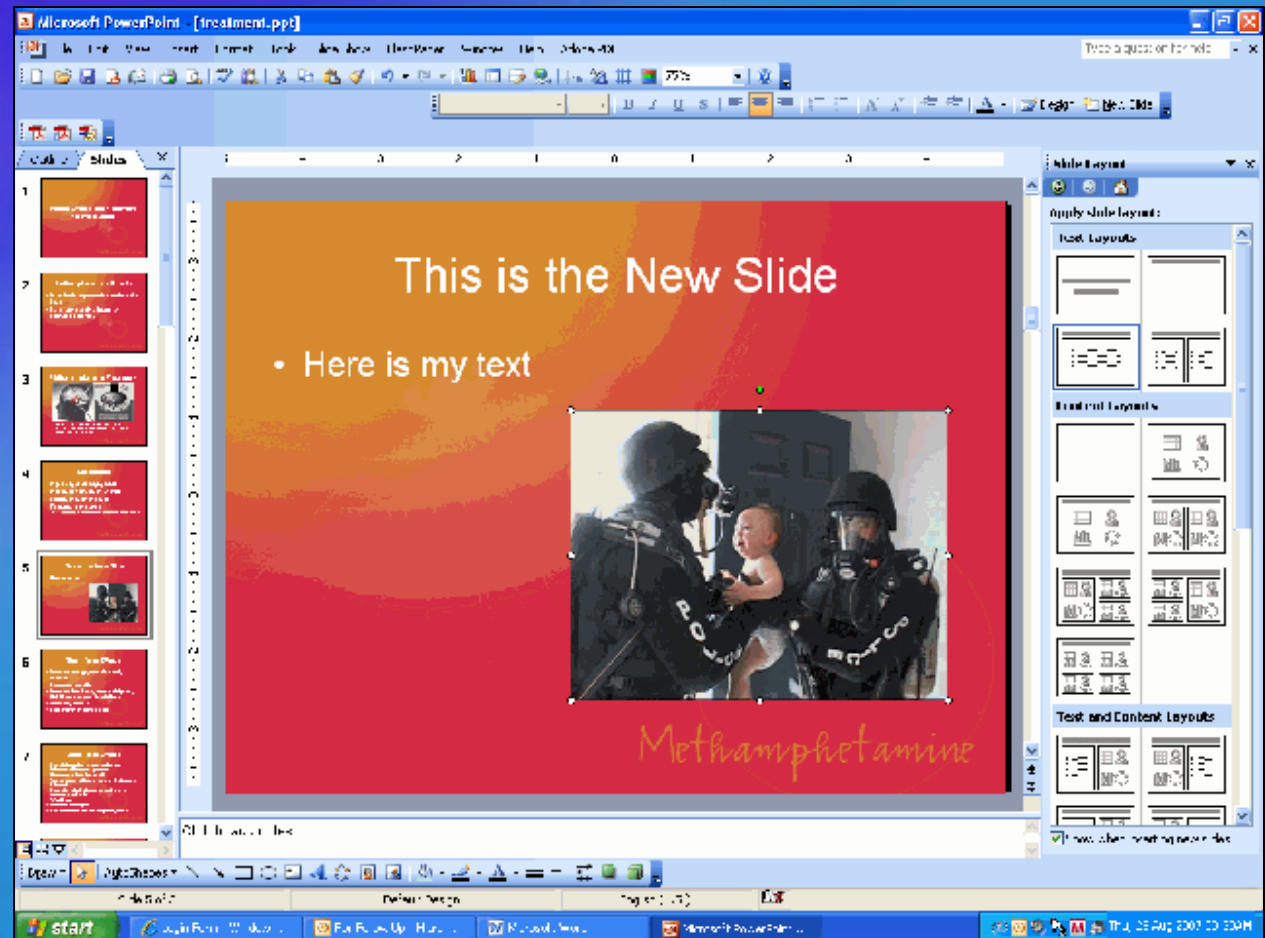
- Click on the picture or graphic
- Click “Insert”



Methamphetamine

To Add a Graphic or Picture

- Your new slide is ready!



Methamphetamine

Ordering Your Slide Show

- Click the Slide Sorter icon in the lower left hand of your screen.

The screenshot displays a slide sorter interface for a presentation on Methamphetamine. The interface shows five slide thumbnails in a grid. A red arrow points from the text 'Click the Slide Sorter icon in the lower left hand of your screen.' to the 'Slide Sorter' icon in the bottom left corner of the interface. The interface also shows a 'Default' button in the bottom right corner.

Slide 11: Brain Changes with Meth
However.....
• Axons don't always grow back correctly
• Different parts of brain recover at different rates
• Impairment of word and picture recall persist
• Impaired ability to manipulate information
- Inhibitory
- Impaired inhibition of prefrontal cortex
• Multiple areas of prefrontal cortex involved in working memory
• Neuroimaging shows changes in the brain

Slide 12: Emergency Treatment Protocol
• Typical ER Protocol for Methamphetamine Psychosis
- Haloperidol 5mg
- Clozapine 1 mg
- Cefepim 1 mg
- Quetiapine 150mg
- Patients
- Fluoxetine can cause stimulation, should not be used for sleep

Slide 16: The Matrix Model
• Phases
- Withdrawal Day 1-15
- Maintenance Day 15-45
- The Wall Day 45 - 120
- Adjustment Day 120-180
- Resolution Day 180+

Slide 17: The Matrix Model
• Empirically supported recommendations
- Multiple weekly sessions for at least 90-120 days
- Pre-treatment program is preferred prior to the MAT
- Can encompass more than one medication
- Should include strategies to manage the most patients to which program are suitable

Slide 18: Summary on Research Findings
• Quality of relationship is a stronger predictor of outcomes than experience level, theoretical orientation, or education

Slide Sorter Default

Methamphetamine

Ordering Your Slide Show

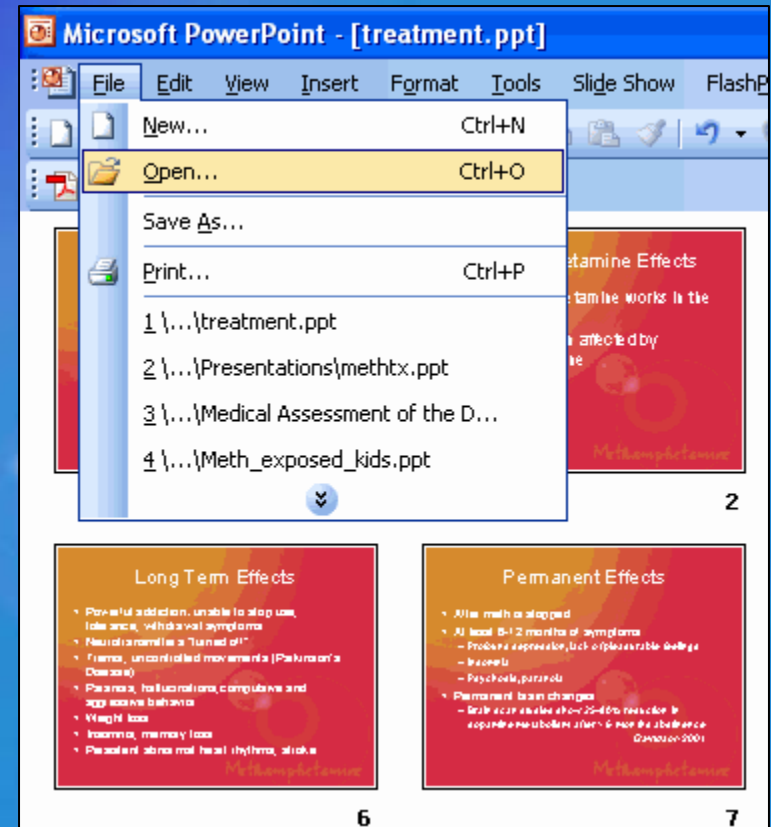
- Click on the slide you want to move. Drag and drop the slide to its new position.
- Then click the “Save” option under the File menu



Methamphetamine

Combining Two Slide Shows

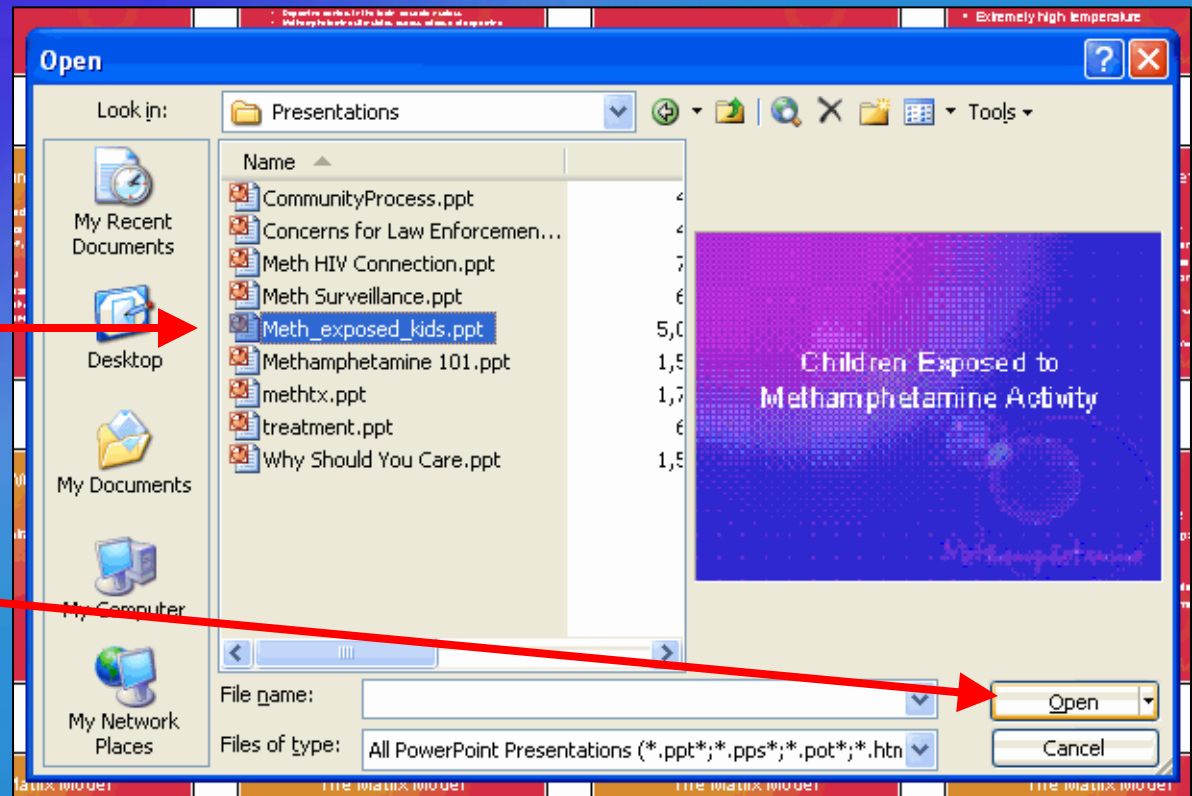
- Start by opening the slide show you want to appear first in your presentation. Make sure you are in Slide Sorter view.
- Click the “Open” option under the File menu



Methamphetamine

Combining Two Slide Shows

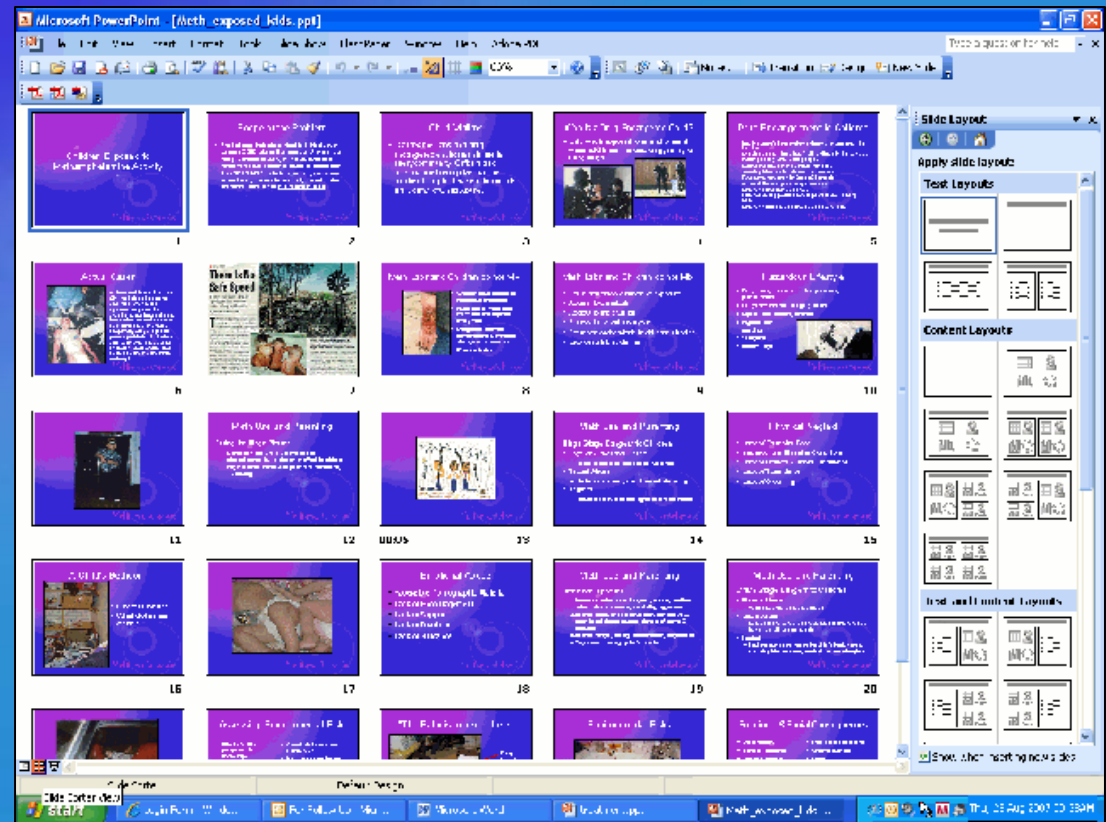
- Click on the presentation you want to add
- Then click “Open”



Methamphetamine

Combining Two Slide Shows

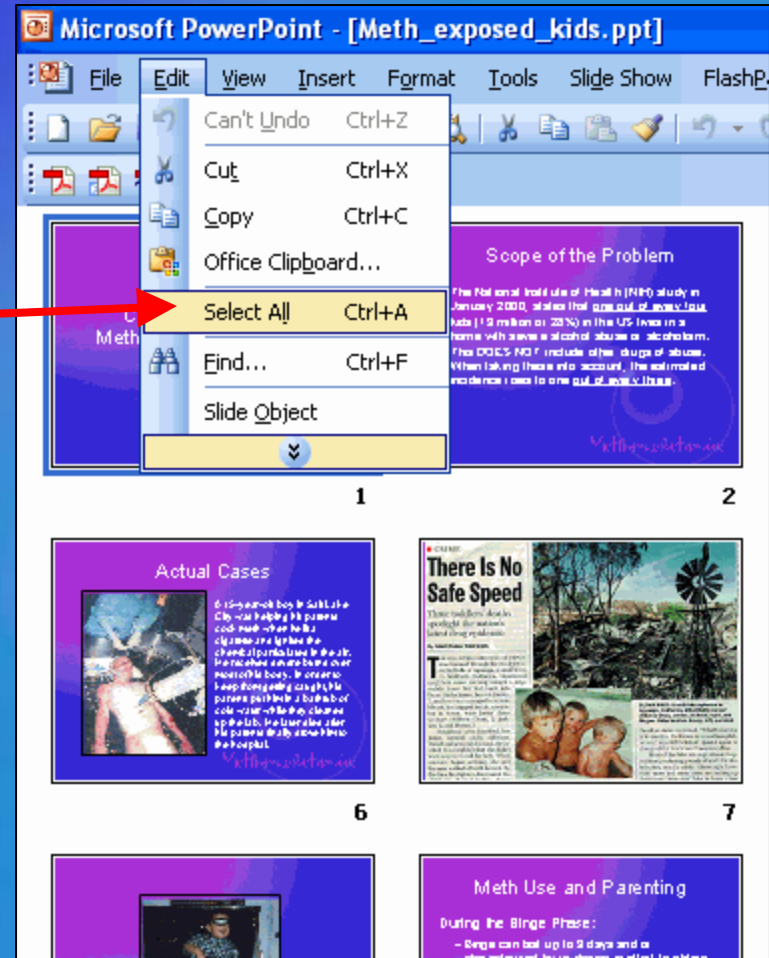
- Open the new presentation in Slide Sorter View by clicking the slide sorter icon



Methamphetamine

Combining Two Slide Shows

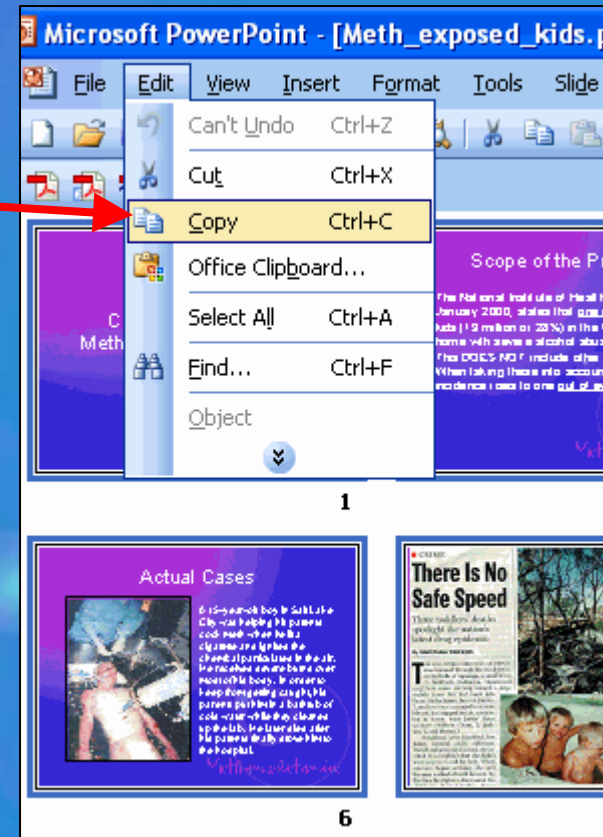
- Click the “Select All” option under the Edit menu



Methamphetamine

Combining Two Slide Shows

- Click “Copy” under the Edit menu



Methamphetamine

Combining Two Slide Shows

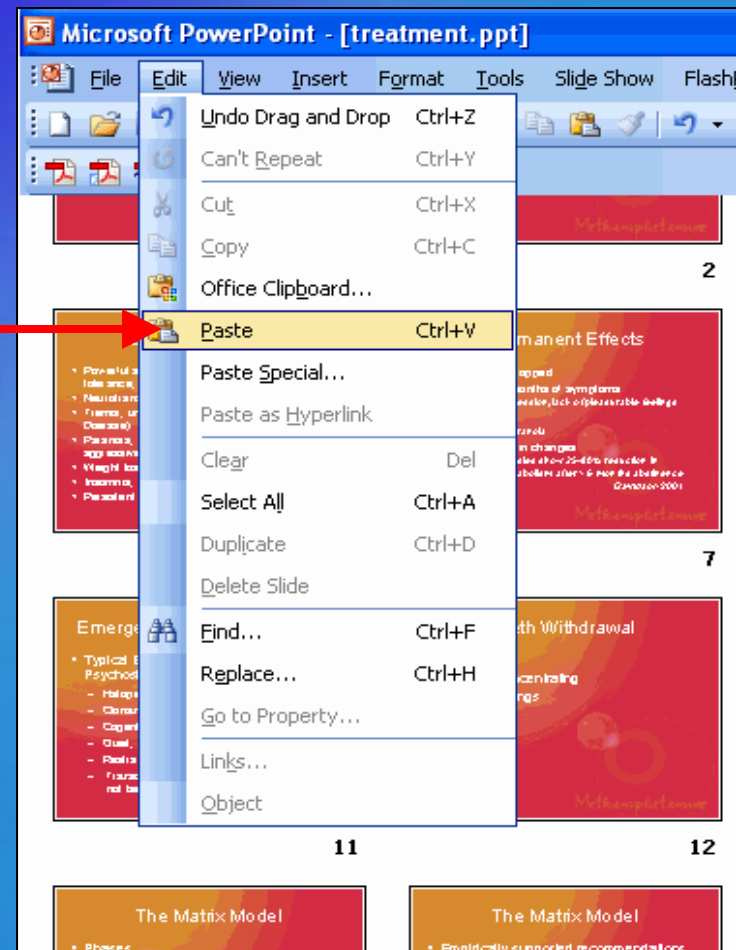
- Go back to your first presentation in Slide Sorter mode.
- Make sure your cursor is at the end of the presentation



Methamphetamine

Combining Two Slide Shows

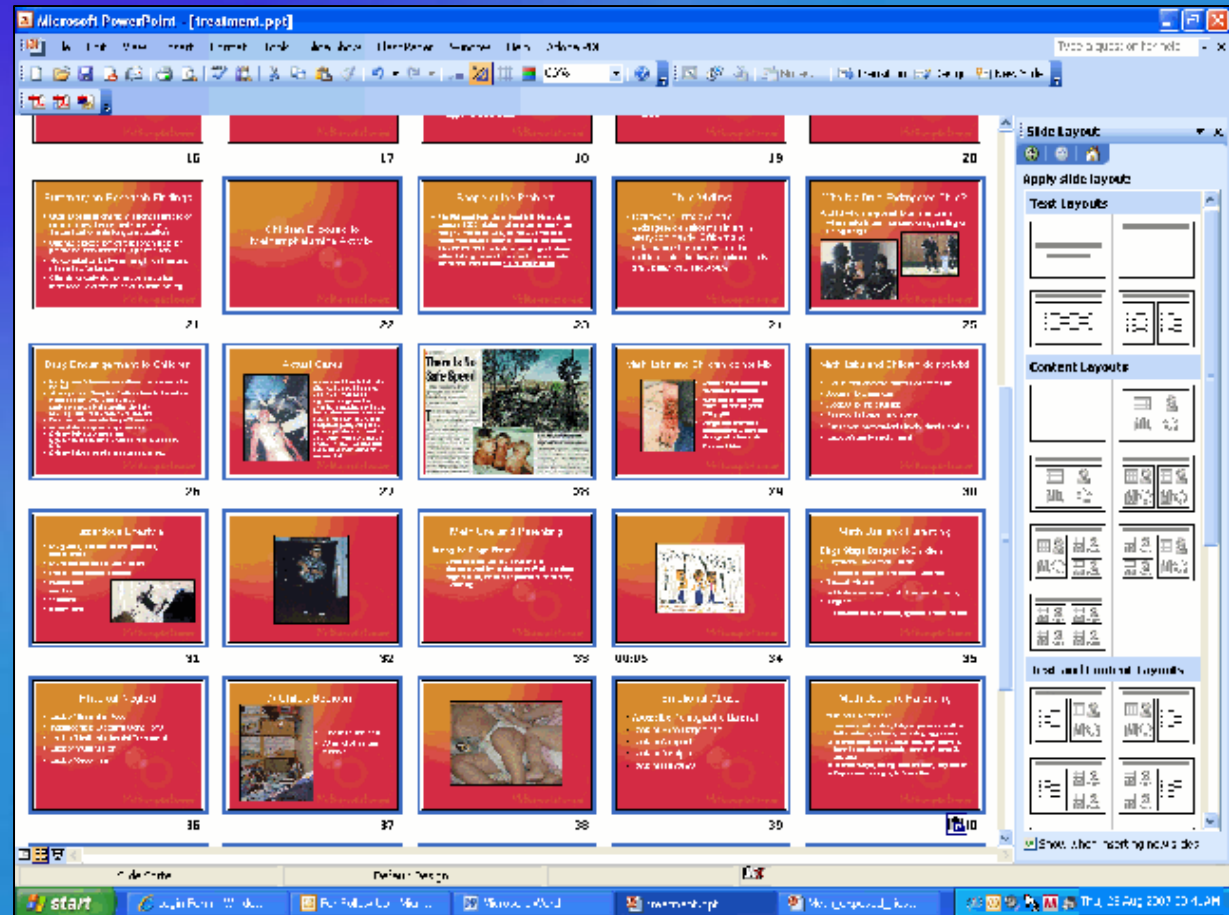
- Click the “Paste” option under the Edit menu.



Methamphetamine

Combining Two Slide Shows

- The second slide show flows in to the end of the first slide show.
- Notice that the Master Slide of the original slide show becomes the background for all slides.



Methamphetamine